



PUTTING MADE EASY

Introducing the Elmer M1 Putter.

This revolutionary new putter includes a wealth of unique and patented features to overcome all your existing putter problems.

With perfect face-balanced weighting, the M1 Putter can be adjusted to your perfect lie angle, keeping the face flat and square at all times.

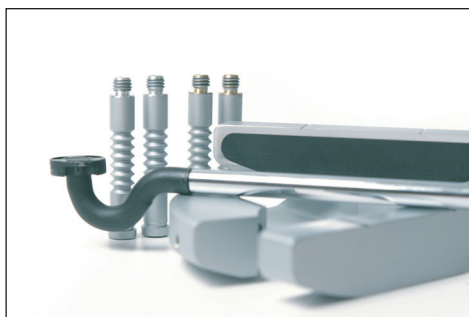
The shaft is also connected and centred directly behind the impact area for the most solid stroke possible.

Choose between the CNC-milled polymer insert or CNC-milled non-insert faces (both supplied as standard).

The overall heel/toe bias weighting can be easily changed using the supplied brass or aluminium rails, ensuring the putter always tracks on the correct line.

In addition, lateral balance can be adjusted by sliding the putter body towards or away from the face. This will affect the mass at impact, allowing golfers to compensate for problems they may experience due to always being short or long with their putts.

The M1 is milled from a single solid aluminium billet to ensure perfect consistency. It can be set for left- or right-handed use and is available in lengths of 33½" up to 46" Belly.



*Both the R&A and USGA
have ruled the Elmer M1 Putter
conforms to the Rules of Golf*